

VMCC Warwickshire Section Newsletter

news letter No. 51

April 2024

Happy Easter to you all. Spring is definitely here and with it the promise of a fair few months of good riding weather.

We had a very reasonable turnout for our first 'pop up' of the year in sunny weather. Hopefully with many more to come. We have seen one or two new faces at our events so welcome to the club.

This news letter contains a mixed bag of items including a couple of 'for sale' bikes. Firstly our Chairman reminisces:

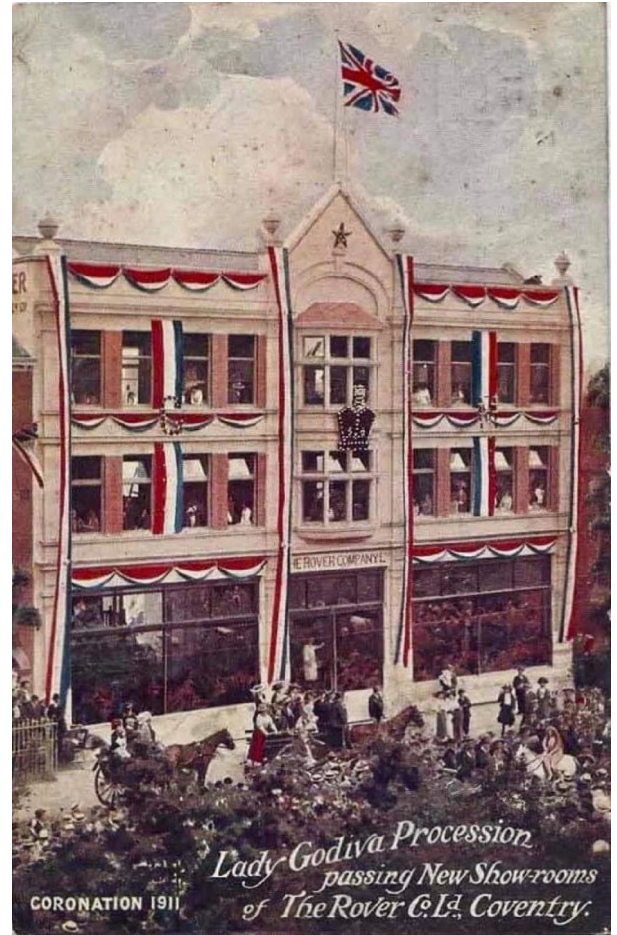
Chairman's Chat: The original Rover showroom...

As a child many years ago, I got separated from my parents in a busy department store in Coventry - the store in question was, I think, called Benleys. However, I did the right thing and sat on a nearby bench and let Mum and Dad find me...and then give me a stern talking to. As the years went by, this infamous store changed names and purpose. It became Inter Shop (bargain shopping) and The Litten Tree Pub (drinking and dancing). In recent years, it has become a Community Arts space with a stripped out interior, perfect for art exhibitions, music and poetry readings and is now simply called LTB showrooms.

But this building originally started out as one of the world's first purpose build car showrooms for the Rover Company Ltd. Built in 1905, this early Automotive dealership even had a large lift that could take shiny new Rovers from the nearby Meteor works to a luxury showroom on the top floor. In fact, King George V even rode on the lift to inspect cars and munitions. During the second World War, this very same building became the City council's war headquarters because of it being of blast proof construction. Just recently, on March 16th there has been a 'Rovers return'...a proud display of pre war Rovers on parade outside the LTB showrooms. Star of the day being a 1907 tourer. Inside the building, was interesting slide shows and talks all about the early days of Rover and the building itself. I even got chatting to a gentleman who had a collection of Rover motorcycles. This historic building has managed to survive its many incarnations,

however its place in automotive history and blast proof reputation will not save it. The building is being demolished at the end of the year.. as part of the city's redevelopment....but that's progress...I think.

David Kendall



To be sold by Bonhams at the Spring Stafford Sale at The International Classic Motor Cycle Show on April 20/21.

The late Clive Wood, a prominent figure in Teesside industry committed to philanthropy, had, amongst other interests a strong affinity for British motorcycles.

Highlights of Wood's 40- plus collection, to be offered entirely without reserve, include numerous rarities such as a 1931 Matchless

593cc Silver Hawk project (estimate £17,000-£22,000) and a 1930 Matchless 400cc Silver Arrow, estimate: £8000-£10,000. Plus a Vincent Black Lightning!

Bargain replacement carburettor – an update to Tony's article in the Late Winter news letter. * all news letters are on our website if you wish to read the article.

An update on my PKW carb. I have now had a ride on both my T100 rigid and my 650 Hunterbird (650 Triumph engine in Huntmaster frame.). Both fitted with the £25 eBay flat sided PKW carbs.

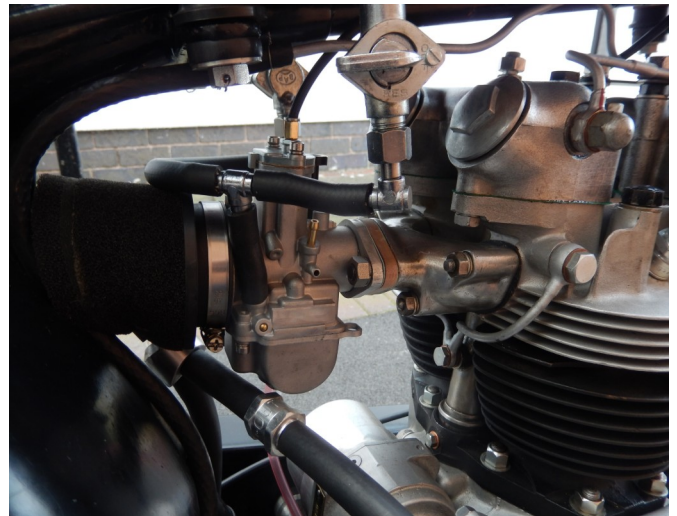
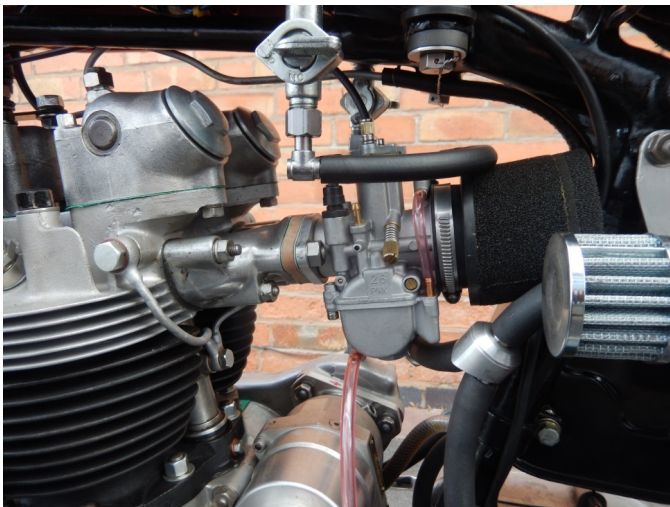
I can report both started instantly and I have done about 25 miles on both and they work really well.

One is 26mm and the other 30mm bore. I was sent jets and there is information on jetting on the internet. However all I did with both carbs was drop the needle one notch. I'm really pleased with the results. A nice steady tickover and easy starting.

Also they weigh 411 grams which is under half the weight of a standard Concentric which costs £200.

One came with a normal flange but the second was just a parallel boss for a rubber tube. I knocked up a std 2"centre adapter and pressed it on with 648 loctite as belt and braces as the other carb had the same method.

Regards Tony Harris



What we have done in the past month

Club night at K.R.C.

This was a 'Bring and Buy' auction night. A good range of decent quality items were donated by the members and the whole lot was sold. This added over £300 to the section funds. It was an entertaining night which seemed to be enjoyed by the good number of attendees.

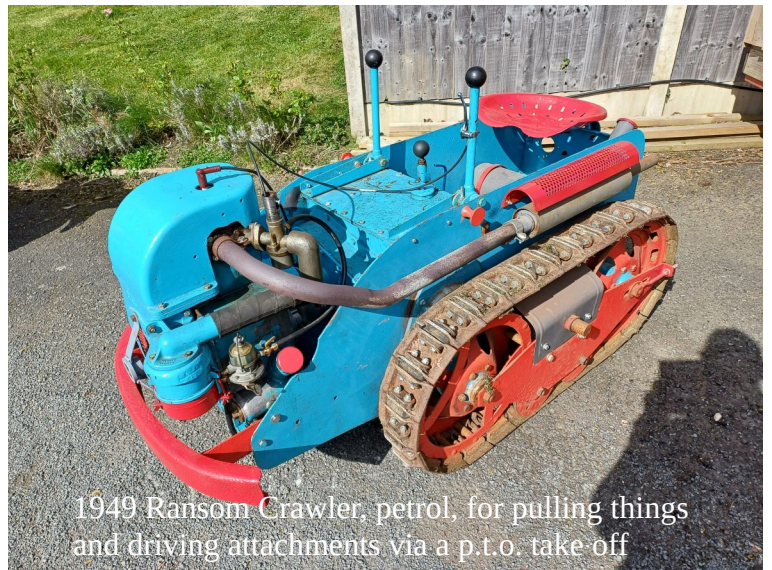
Pop up at Farmers Fayre, Stoneleigh Park Show ground.

After a false start the previous Sunday we finally made it to our first pop up meet of the year. Nineteen members, on 17 bikes.....and a 1029 Bentley! A super turnout on a cool but sunny morning. I'll let the pictures give more of the flavour of the event:





Later in the morning a few of us rode to the Shoulder of Mutton, Grandborough for a supposed 4 stroke motorcycle gathering but when we arrived there were very few there. We were told that the bikes were welcome from 9 till 12 then it was open to all forms of transport.



1949 Ransom Crawler, petrol, for pulling things and driving attachments via a p.t.o. take off

These two were what caught my eye:



A battered looking 'Moggy' which the young owner had owned 'for years'. He said that it was solid and drove very well.

Mike Hailwood Memorial Run. Monday 25 March

This run is an annual event to visit the grave of the legendary motorcycle racer around the anniversary of his death. He lived in the Tanworth in Arden area and is buried in the village churchyard. I volunteered to lead the run there as I had done a couple of times previously. This year I also volunteered to lead a run on behalf of the Meriden Branch, Triumph Owners Motorcycle Club (TOMCC). So there would be just one run. The starting point would be the entrance to the grounds of Kenilworth Rugby Club. I was riding my 2011 Bonneville as my 1963 Tiger 90 was out of service. At Grandborough the previous day we found that the Bonnie's oil cooler was leaking slightly! But I decided not to cancel the run. A bottle of oil was carried.

The weather was not looking too good and it was drizzling when I arrived at KRC. Out of a possible near 600 members, no one else turned up! I decided to go it alone and left in light rain. The route was via Rouncil Lane, Beusale, Wroxall, Chadwick End, Hockley Heath, Umberslade Farm cafe. A very pleasant run in drying conditions so I arrived at the cafe in dry weather, and never saw another drop of rain. A nice hot latte and a sticky bun went down well in the charmingly rustic cafe. In previous years we sat outside in the sun! It is then just a mile ride into the village to park by the church.



The path leads down through the gravestones and past where 1960's/70's singer/songwriter Nick Drake (sister of actress Gabrielle Drake) is buried. Suicide at just 26 years old. Several yards further on is Mike's plot which he shares with his young daughter, who died in the same car crash, and recently his widow Pauline. The site overlooks a view of the countryside stretching for miles. On the way back up the path I passed a small group of tourists and their guide all looking at Nicks grave.

'The Bell' pub was just a few yards from my bike and whose 'facilities' were welcome. After checking the oil – just a drop was needed to top up – I exited the quiet village by a different route but basically followed a similar route back home. On the way I mused that it was probably good that not all the other near 600 members had turned up. But a few would have been nice.



Forthcoming events

April 7, Spring Run,

One of our long standing runs was given a make over last year and is now even better. Meet at 10.00am at Willoughby cafe, on A45. the scenic ride, usually around 30 miles, will finish at the Bell in Monks Kirby.

April 10, Club Night at K.R.C. - A talk by David Bardell on the Falklands Conflict.

April 28, VMCC Relay Rally.

This is a national club event which encourages members to visit other sections 'check points' just to be sociable and visit areas not previously ridden through.

Our checkpoint is the Long Itch Diner which will be 'manned' by volunteers from our section to welcome visitors. Last year saw about 50 riders on an assortment of bikes. From around 9.30am to around 3.30 ish. More details in V&C and on the National website.

As well as these prearranged events we may well have another 'pop up' so please watch out for notifications and support these very popular Sunday morning gatherings.

This event is NOT one of ours but one I've enjoyed on several occasions. Now bigger and even better than in previous years:

We're looking forward to welcoming you all to
**KICKBACK #28! 13-14 April at Three Counties Show
ground. Great Malvern, WR13 6NW**

Scenic ride out to Malvern Hills venue
Over 250 motorcycle gems on display
Custom Show

Classic Show

Pro Stunt Bike Show

2024 National Championship Finals

Retail stalls

Club stands



Free show posters
Harley Davidson Experience Tour (see attached)
Meet the Harley team = test rides around Malvern Hills
Camping book with pitchup.com
Free parking
Free entry for under 12s
Cafe, bars and food stalls
Judging on the Saturday
Awards ceremony on Sunday

Advance tickets just £13 at Ticketsource.co.uk/kickback

More show info at KickbackShow.com

See you there!

Lorne Cheetham
Events Director - KICKBACK
Custom Classic Motorcycle Shows
Independent Exhibitions Ltd
07758 368 072
kickbackshow.com

Norton Club meet

. I notice in the fixture list you have an invite to Welford from the Leic / Northants section of the Norton club on the 19th May.

This event is not just a club meeting it is our section open day and Colin hopes to have 100 Nortons there. We usually get the biggest collection of New Donnington/Solihull ones but it's a special event this year with guests etc. We are aiming for 100 Nortons and this is the theme for 2024

If you could make this known in the next newsletter it would be appreciated. *Tony Harris*



Although the flyer says CAR, the person handing out these flyers said that ALL vehicles are welcome, to make an event to rival Atherstone or Hinckley.

Riders and machines wanted for the COVENTRY PARADE The Warwickshire Section Premier Event

Sunday 11th August 2024

- All classes of machines welcome
- Discounted rates for riders of girder rigid machines
- Coventry's most historic motoring event
- Coombe Abbey Country Park Venue
- Segregated field area with safe parking
- Toilets and Café

- Guest of honour to flag machines away
- Live commentary throughout the day
- 50-mile ride through quiet Warwickshire/Leicestershire roads
- Short route for low powered machines
- Highly experienced long-term club member organising team

More details available from Robert Thomas
TEL: 07739 583763
EMAIL: robert@partsmade.co.uk

Bits and pieces

Artwork.

Newer members may not know that the heading used for our news letters contains a drawing created by our talented chairman, David. It was then coloured by his equally talented daughter. It says 'lockdown news' as these news letters were started during those dark days.

Pailton Steam Event - assistance required

We are looking at the possibility of providing catering at this event. If you have experience in this field and would like to help or can recommend a business to provide this service please contact one of the committee a.s.a.p.

Are classic motorcycles exempt from ULEZ?

If the DVLA's records do not contain the vehicle's Nox levels, the technology will find the bike's date of registration to decide its status. If it is more than 40 years old it will be exempt, but otherwise if it was registered before 2007 it may be charged.

Items For Sale

Triumph Speed Twin 2020.

This is my Fathers Speed Twin who is hanging up his leathers, only 3178 miles from new with full service history. MOT until June 2024 but can be extended if required also comes with Triumph heated grips, front fender extender and throttle spacers fitted, £7995.00 ono. **Please contact Steve on 07860 629650 for more info.**



1957 Norton 600 99. Very original condition except Dunlop alloy rims.

All matching numbers, long term ownership and used during summer months only. Easy starter and very reliable. Top box/rack, under 30K from new. Priced to sell £4600 ono

Tony. 01455 457 382 or 07504 901

937 nortones41000@gmail.com (Hinckley)

Kind regards Tony (Harris)



A different type of bike for sale!



Ron Thorley and wife Christine used this exercise bike during recuperation from various ailments. It resides in their house, warm and dry, and no longer used. So it needs to go to another home.

It is in excellent condition and all functions and displays work as they should. It needs to be plugged in to a domestic electric socket.

The machine is in Tile Hill, Coventry.

Please phone 07516511432

Price is around £60 which seems to be a bargain.

What should I do Immediately after a crash?

First things first, make sure you're okay. If the road is quiet and there is no immediate danger, sit up, count your fingers and check you can move your arms. If you can move on your own, stand up and get yourself to an area safer than the middle of the road.

Now you are a bit less at risk have a think if there is anywhere that hurts more than your pride. Don't go mad through, the adrenalin coursing through your veins will do a very good job of masking much of the pain. You may have to wait for a bit later before the aches and pains begin to kick in fully.

Next up we need to check the area around us is safe, a non-biking member of the public approaching a bike that's on its side and in gear with the engine running is an injury waiting to happen! The important thing here is to not move the bike, doing so would impede any investigation the police need to carry out. Make it safe but don't mess up your chances of getting paid out by your insurance.

Should I call the police after a crash?

Absolutely, always get on the phone as soon as you can and if possible get the police to attend. The driver of the vehicle could be uninsured, banned or even over the limit. It's their job to find that out. The emergency services call handler will almost always send an ambulance too – even if you don't feel like you need it, accept it. I guarantee after 15 minutes standing at the side of the road you'll feel like you could do with it!

Based on an article on Visor Down web site

VMCC Warwickshire Section Events diary 2024 *(see notes at the bottom)*

| | | | |
|-------|--------------|----------------|--|
| April | 7 | Sun. | Spring Run. 10.00am Willoughby Cafe, A45. Ride to Bell Inn, Monks Kirby. |
| | 10 | Wed. | Club night. KRC.– Guest speaker David Bardell on The Falklands Conflict |
| | <i>13/14</i> | <i>Sat/Sun</i> | <i>Kickback Custom and Classic Bike Show – See this news letter for more info.</i> |
| | 28 | Sun. | VMCC Relay Rally – Warwickshire Section checkpoint, the Long Itch Diner |
| May | 8 | Wed. | Club night – Guest speaker Patrick Fitzgerald – “In praise of the turbo prop” |
| | 19 | Sun. | Rugby Bikefest – Warwickshire Section have booked a stand |
| | 19 | Sun. | Norton Owners Club meet at Welford, Northants (Non Section meeting) |
| | 26 | Sun. | Breakfast Ride in to the Malt Kiln Farm (BH) |
| June | 2 | Sun. | The Kenilworth Run (MG) |
| | 12 | Wed. | Club night – On Yer Bike night Fish & Chip supper |
| | 16 | Sun. | VMCC: The Banbury Run, Gaydon, Warwickshire. |
| | 24 | Mon. | Cassington Bike Night (Non Section meeting) |
| | 30 | Sun. | Steam Event at Pailton. The 3 rd year of this super event. |
| July | 3 | Wed. | Chairman’s Social Meet at The Blue Lias Inn |
| | 10 | Wed. | Club night – Bring a bike |
| | 21 | Sun. | Founders Day, Stanford Hall |
| Aug. | 4 | Sun. | The Bill Lacey Run, Princethorpe to Evenley, Northants. |
| | 11 | Sun. | Coventry Parade (Provisional date – TBC) |
| | 14 | Wed. | Club night – Bring a bike |
| Sept. | 8 | Sun. | Genteel Run (DK) |
| | 11 | Wed. | Club night – Guest speaker Mike Wills presenting End to End |
| | 29 | Sun. | Afternoon Tea & Cake Run (SD) |
| Oct. | 9 | Wed. | Club night – Bring & buy |
| | 13 | Sun. | Autumn Leaves Run (SD) |
| | 26 | Sat. | Open Day at National Motorcycle Museum. |
| | 27 | Sun. | Ride in to the Antelope Inn, Lighthorne |
| Nov. | 13 | Wed. | Club night – Guest speaker Steve Allen |
| | 27 | Wed. | Christmas Lunch (Provisional date – TBC) |
| Dec. | 11 | Wed. | Club night Christmas Quiz |

** all events and dates are subject to change. Please check before travelling.*

** events will be added (or deleted) as we go through the year.*

** if you know of an event you think members may be interested in then please contact one of the committee*

** events in italics are NOT VMCC events but may be of interest to members*